

# Touch Overlays



With advent of Ipad, the touch technology has gained adoption across all ages and business verticals and now it is a way of life both in personal as well as business spaces.

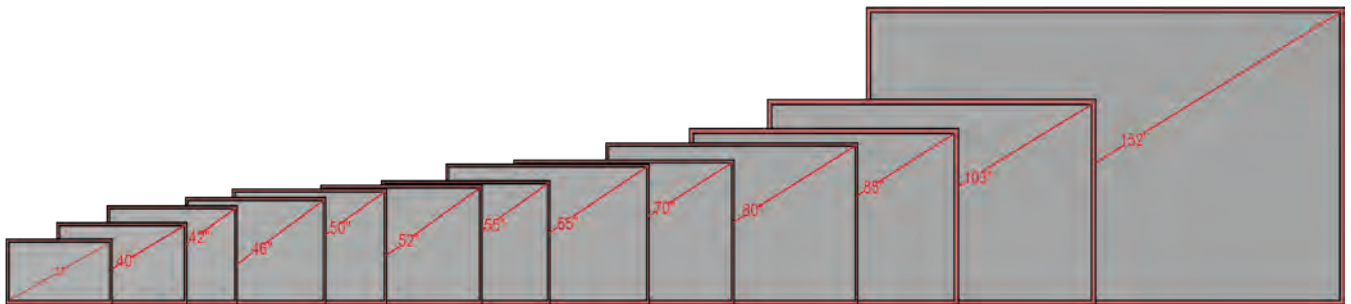
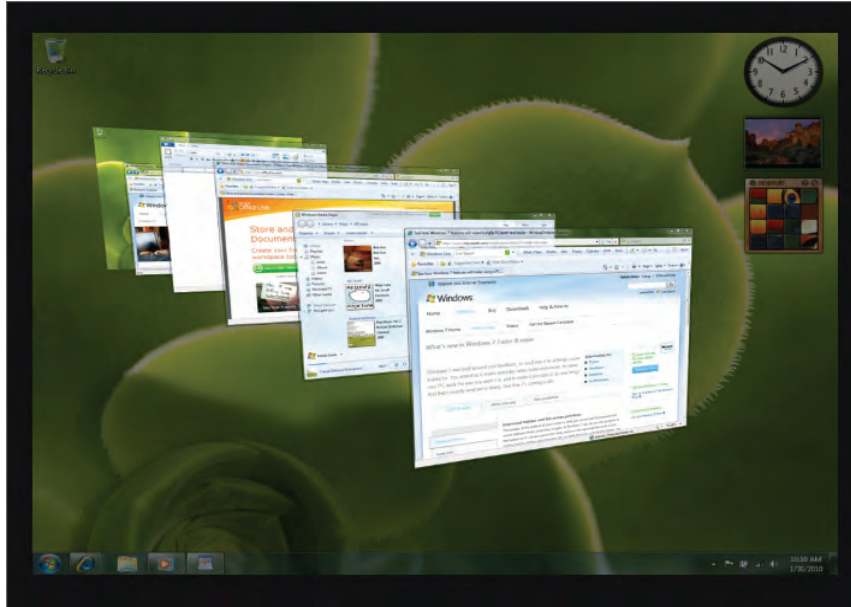
WavexTouch, a global player in interactive technology, offers you a chance to adopt latest technology by transforming your existing passive or dumb display panels into touch interactive displays through our Overlay product range: "Overlayer" or "Bespoke"

Our Overlayer range offers you multi touch capabilities depending on your requirement: dual touch upto 40 touch. Overlayer can be customized to any display, be it industrial or consumer and for any brand; NEC, Sharp, Philips, Mitsubishi, Samsung, LG, Panasonic, Barco and any size of single screen; 32 to 152 inch diagonal.

Our "Bespoke" range offers touch offers touch interactive technology for videos cubes for any size walls with the diagonal size of 400" both for LED as well as rear projection video cubes any brands including Samsung, LG, Sharp, NEC, Delta, Mitsubishi, Barco and others. So if you have stacked displays of 1x2 or 3x7 and anything in between or beyond, we can make it interactive. We will help your organization to adopt interactive technology.



# Overlayer



If you are in corporate or education or retail spaces and already have invested in displays, which are passive, we will be able to help you to convert them in touch interactive display for you to use them more effective and get better ROI from your displays.

32 inch to 152 inch; plasma, LCD/LED, we can transform every kind of display into touch interactive display and number of touch (2 touch – 40 touch) as per the application you would like to run on the same.

And we also can give it in Red, Blue, Yellow and green, to suit your style.

Passive panel converted into touch interactive display using WavexTouch Overlayer can be used as interactive boards in schools, training rooms or a corporate board room or meeting room; information kiosks in schools, corporate, retail and public places and way finding kiosks in campus; school, university and corporate or in retail and public places.

**Regular Color:**  Boroque Black

## Optional Color

 Ash\*

 Cherry

 Lagoon Blue

 Beech\*

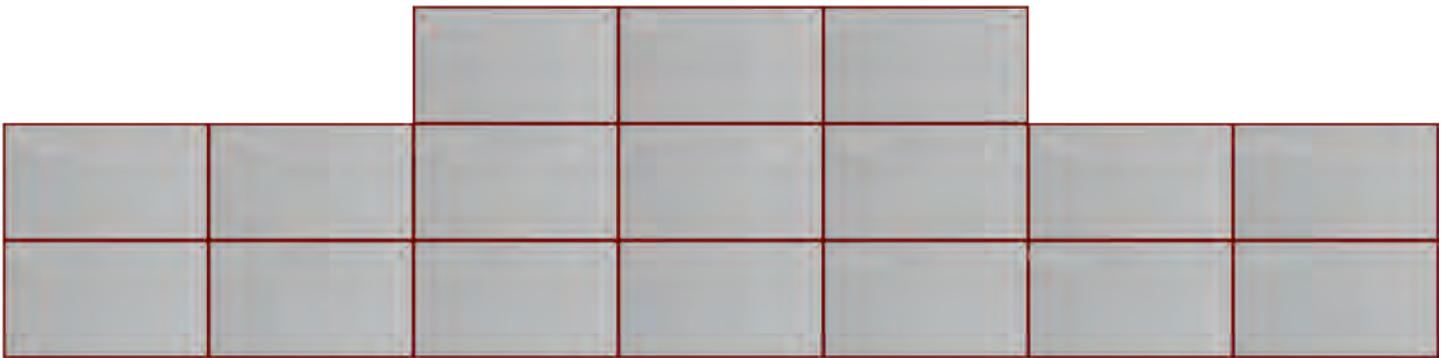
 Hickory

 Apple

\* Metallic colour are indicative only, actual colour and texture will differ from the one shown

\*\* Colours on screen will vary depending on your screen settings.

# Bespoke



Are you buying a video wall for a specific requirement and want it to be interactive, talk to us and we will be able to offer you, Bespoke touch interactive solutions from Wavextouch, which are specifically customized for the Video wall.

For rear projection displays, we customize the pedestal, which will support the overlay, so that it can be moved easily for maintenance.

Bespoke touch interactive solutions are offered in different colors and also wood finishes to suit, the spaces for Video walls installation. Bespoke offering starts from 1x2 display wall up to 3x7 display wall for Mitsubishi, Barco, Delta, Planar, Vtron, Christie, Eyevis and other for rear projections and all the brands of LED displays.

Interactive video wall applications are in command and control center, Experience center in corporate and retail spaces.

**Regular Color:**  Boroque Black

## Optional Color

 Ash\*

 Cherry

 Lagoon Blue

 Beech\*

 Hickory

 Apple

Ask us for our wooden trims to match the interiors of the display installation area

\* Metallic colour are indicative only, actual colour and texture will differ from the one shown

\*\* Colours on screen will vary depending on your screen settings.

# Specification

## GENERAL

Available Sizes	Overlayer 32", 40", 42", 46", 50", 52", 55", 57", 60" 65" to 152 inches Bespoke (Custom sizes, maximum 400 inches diagonal)
Glass	3mm tempered glass (Custom version available upon request)
Frame Color	Black powder-coated. (Custom colors available upon request)
Touch Points	6/10/16/32/40 touch points
Touch Technology	Infrared
Touch Method	Finger Gloved hand (with diameter $\geq 5\text{mm}$ ) Stylus (with diameter $\geq 5\text{mm}$ )
Construction	Aluminum/Steel, tempered glass
Luminous Transmission	95-100% typical with clear glass
Touch Activation Force	No pressure required
Finger Touch Accuracy	$\pm 1.5\text{ mm}$
Touch Durability	Unlimited
Touch Response Time	7ms-13ms
Touch Resolution	32767 x 32767
OS	Windows 7/8/10, Mac OS X, Linux (some ver.)
Multi-Overlays Support	Yes (One PC)
TUIO/Flash Protocol and Windows Native	Yes
HID Support	Yes
Certificates	FCC, CE, RoHS, IP65 Approved

\*\*\* Whiteboard Software included

## ENVIRONMENT

Operating Temperature	0°C to 60°C
Storage Temperature	-40°C to 85°C
Operating Humidity	10% to 90% RH, non-condensing;
Storage Humidity	10% to 90% RH, non-condensing

## ELECTRICAL

Power Supply	Single USB Connection Operating $\leq 750\text{ mW}$ ; Standing by $\leq 250\text{ mW}$
Connection Options	Standard: USB

## WARRANTY

Warranty	1 year parts and labor
----------	------------------------

1000 N. West St. Suite 1200, Wilmington DE 19801, United States of America

T: +1302.295.5047 F: +1 302 295 4801

[www.wavextouch.com](http://www.wavextouch.com)